



MIAMI-DADE COUNTY
 DEPARTMENT OF PERMITTING, ENVIRONMENT, AND REGULATORY
 AFFAIRS (PERA)
 BOARD AND CODE ADMINISTRATION DIVISION
NOTICE OF ACCEPTANCE (NOA)

MIAMI-DADE COUNTY
PRODUCT CONTROL SECTION
 11805 SW 26 Street, Room 208
 Miami, Florida 33175-2474
 T (786) 315-2590 F (786) 315-2599
www.miamidade.gov/pera/

Pittsburgh Corning Corporation
800 Presque Isle Drive
Pittsburgh, PA 15239

SCOPE: This NOA is being issued under the applicable rules and regulations governing the use of construction materials. The documentation submitted has been reviewed and accepted by Miami-Dade County PERA -Product Control Section to be used in Miami Dade County and other areas where allowed by the Authority Having Jurisdiction (AHJ).

This NOA shall not be valid after the expiration date stated below. The Miami-Dade County Product Control Section (In Miami Dade County) and/or the AHJ (in areas other than Miami Dade County) reserve the right to have this product or material tested for quality assurance purposes. If this product or material fails to perform in the accepted manner, the manufacturer will incur the expense of such testing and the AHJ may immediately revoke, modify, or suspend the use of such product or material within their jurisdiction. PERA reserves the right to revoke this acceptance, if it is determined by Miami-Dade County Product Control Section that this product or material fails to meet the requirements of the applicable building code.

This product is approved as described herein, and has been designed to comply with the Florida Building Code, including the High Velocity Hurricane Zone.

DESCRIPTION: LightWise Architectural Hurricane Resistant Glass Block Window

APPROVAL DOCUMENT: Drawing No. HRWS-001, titled "LightWise Architectural Systems Hurricane Resistant Window", Sheets 1 through 3 of 3, dated 12/07/2011, prepared by Pittsburgh Corning Corporation, signed and sealed by Alexis Spyrou, P.E., bearing the Miami-Dade County Product Control revision stamp with the Notice of Acceptance number and expiration date by the Miami-Dade County Product Control Section.

MISSILE IMPACT RATING: Large and Small Missile Impact Resistant

LABELING: Each unit shall bear a permanent label with the manufacturer's name or logo, city, state, model/series and following statement: "Miami-Dade County Product Control Approved", unless otherwise noted herein.

RENEWAL of this NOA shall be considered after a renewal application has been filed and there has been no change in the applicable building code negatively affecting the performance of this product.

TERMINATION of this NOA will occur after the expiration date or if there has been a revision or change in the materials, use, and/or manufacture of the product or process. Misuse of this NOA as an endorsement of any product, for sales, advertising or any other purposes shall automatically terminate this NOA. Failure to comply with any section of this NOA shall be cause for termination and removal of NOA.

ADVERTISEMENT: The NOA number preceded by the words Miami-Dade County, Florida, and followed by the expiration date may be displayed in advertising literature. If any portion of the NOA is displayed, then it shall be done in its entirety.

INSPECTION: A copy of this entire NOA shall be provided to the user by the manufacturer or its distributors and shall be available for inspection at the job site at the request of the Building Official.

This NOA revises NOA # 08-0731.08 and consists of this page 1 and evidence pages E-1 and E-2, as well as approval document mentioned above.

The submitted documentation was reviewed by **Carlos M. Utrera, P.E.**



[Handwritten Signature]
 02/29/12

NOA No. 11-1229.03
Expiration Date: October 16, 2013
Approval Date: March 8, 2012
 Page 1

NOTICE OF ACCEPTANCE: EVIDENCE SUBMITTED

A. DRAWINGS

1. Drawing No. **HRWS-001**, titled "LightWise Architectural Systems Hurricane Resistant Window", Sheets 1 through 3 of 3, dated 12/07/2011, prepared by Pittsburgh Corning Corporation, signed and sealed by Alexis Spyrou, P.E.

B. TESTS

1. Test reports on
 - 1) Air Infiltration Test, per FBC, TAS 202-94
 - 2) Uniform Static Air Pressure Test, Loading per FBC TAS 202-94
 - 3) Water Resistance Test, per FBC, TAS 202-94
 - 4) Large Missile Impact Test per FBC, TAS 201-94
 - 5) Cyclic Wind Pressure Loading per FBC, TAS 203-94
 - 6) Forced Entry Test, per FBC 2411 3.2.1, TAS 202-94along with marked-up drawings and installation diagram of LightWise Architectural Hurricane Resistant Windows, prepared by Architectural Testing, Inc., Test Report No. **B2913.01-501-18**, dated 10/28/2011, signed and sealed by Michael D. Stremmel, P.E.

"Submitted under NOA # 08-0731.08"

2. Test reports on
 - 1) Air Infiltration Test, per FBC, TAS 202-94
 - 2) Uniform Static Air Pressure Test, Loading per FBC TAS 202-94
 - 3) Water Resistance Test, per FBC, TAS 202-94
 - 4) Large Missile Impact Test per FBC, TAS 201-94
 - 5) Cyclic Wind Pressure Loading per FBC, TAS 203-94
 - 6) Forced Entry Test, per FBC 2411 3.2.1, TAS 202-94along with marked-up drawings and installation diagram of KWIK'N EZ Rigid Track Silicone System THICKSET 90 Glass Block with 2-pc. Aluminum Channel, prepared by Architectural Testing, Inc., Test Report No. **79308.01-501-18**, dated 03/26/2008, signed and sealed by Michael D. Stremmel, P.E.



02/29/2012

Carlos M. Utrera, P.E.

Product Control Examiner

NOA No. 11-1229.03

Expiration Date: October 16, 2013

Approval Date: March 8, 2012

NOTICE OF ACCEPTANCE: EVIDENCE SUBMITTED

C. CALCULATIONS

1. Anchor verification calculations prepared by Building Drops, Inc., complying with the 2007 and 2010 F.B.C, dated 12/08/2011, signed and sealed by Alexis Spyrou, P.E.

“Submitted under NOA # 08-0731.08”

2. Anchor verification calculations prepared by Engineering Analytics, Inc., complying with F.B.C 2004, dated 07/29/2008, signed and sealed by Carol D. Hays, Ph.D., P.E.

D. QUALITY ASSURANCE

1. Miami-Dade Department of Permitting, Environment, and Regulatory Affairs (PERA)

E. MATERIAL CERTIFICATIONS

1. Notice of Acceptance No. **10-0812.03**, issued to Caravelle International, LLC dba Quaker Plastics, for their Silicon Extrusions used with Glass Block, approved on 12/30/2010 and expiring on 12/01/2015.

F. STATEMENTS

1. Statement letter of code conformance to 2007 and 2010 FBC and no financial interest issued by Building Drops, Inc., dated 12/08/2011, signed and sealed by Alexis Spyrou, P.E.

“Submitted under NOA # 08-0731.08”

2. Laboratory compliance letter issued by Architectural Testing, Inc., for Test Report No. **79308.01-501-18**, dated 03/27/2008, signed and sealed by Michael D. Stremmel, P.E.



02/29/2012

Carlos M. Utrera, P.E.

Product Control Examiner

NOA No. 11-1229.03

Expiration Date: October 16, 2013

Approval Date: March 8, 2012

REVISIONS		DESCRIPTION	DATE
REV			

PLAN

8'-0" MAXIMUM NOMINAL HEIGHT

6'-0" MAXIMUM NOMINAL WIDTH

SECTION

ELEVATION

9 BLOCKS x 9 BLOCKS

IMPACT RESISTANT
DESIGN PRESSURE RATING
± 68.0 PSF

PLAN

8'-0" MAXIMUM NOMINAL HEIGHT

4'-0" MAXIMUM NOMINAL WIDTH

SECTION

ELEVATION

6 BLOCKS x 12 BLOCKS

IMPACT RESISTANT
DESIGN PRESSURE RATING
± 80.0 PSF

PLAN

4'-0" MAXIMUM NOMINAL HEIGHT

4'-0" MAXIMUM NOMINAL WIDTH

SECTION

ELEVATION

6 BLOCKS x 6 BLOCKS

IMPACT RESISTANT
DESIGN PRESSURE RATING
± 100.0 PSF

ISOMETRIC

TITLE

LightWise Architectural Systems
Hurricane Resistant Window

PITTSBURGH CORNING CORP.
800 PRESQUE ISLE DRIVE
PITTSBURGH, PA 15239

SCALE 1/2" = 1'-0"

DWG. NO. HRWS-001

DATE 12/07/2011

BY LBA

REVISIONS: 0

SHEET 1 OF 3

PRODUCT REVISED
as complying with the Florida Building Code
Acceptance No. 11-1229-03
Expiration Date 10/16/2013

By: *[Signature]*
Miami Dade Product Control

[Signature]
ALEX SPYROU, P.E.
FLORIDA P.E. NO. 6509
127 WINTER PARK, FL 32789
FIRE CERT. OF AUTHORIZATION NO. 28678

SPECIFICATION NOTES:

- **GLASS BLOCK UNITS:** Thickset® 90 Series 8"x8"x4" (nominal size) and all other smaller face sizes, as manufactured by Pittsburgh Corning Corporation.
- **SUPPORTING FRAME:** A ½" thick two-piece aluminum channel with a thermal break, as available from Pittsburgh Corning Corporation. The two pieces consist of a base receptor that is directly anchored to any substrate listed in Anchorage Schedule below. Glass block may be installed within the base receptor with prefabricated sections, or may be installed with one complete prefabricated unit. The snap-on piece is secured with a rubber mallet after the glass blocks have been placed. Frame orientation can accommodate installation from either the exterior or interior side of the building.
- **PLASTIC CHANNEL AND SPACERS:** Extruded white rigid PVC. Rigid PVC plastic channel and spacers extruded by Quaker Plastic Corporation with NOA #10-0812.03 and as available from Pittsburgh Corning Corporation.
- **SEALANT:** Pittsburgh Corning Glass Block Sealant. One part neutral fast curing structural silicone sealant.
- **SEALANT LOCATIONS:** All horizontal and vertical exterior glass block joints; inside corners of supporting PVC base channel; two beads each above and below "long" horizontal spacer (no sealant required for "short" vertical spacers); perimeter joints between glass block and aluminum channel legs and over the rubber gaskets (both exterior and interior sides); and perimeter joints between aluminum channels and substrate walls (both exterior and interior sides).
- **REINFORCEMENT:** Rigid PVC spacers between all horizontal and vertical glass block joints. Rigid PVC channel is required within the two-piece aluminum channel frame at the base (sill) to support the glass block panel and to protect the glass block edges. Placement of rigid PVC channels at sills (lambds) and top of glass block panel within the two-piece aluminum channel is optional. Spacers in the rigid PVC base (sill) channel are not required.
- **SHIM SPACES:** Maximum ¾" shim space per side for all panel sizes.

ANCHORAGE SCHEDULE

SUBSTRATE	MATERIAL DATA	FASTENER	SPACING	MIN. EMBEDMENT (E)	MIN. EDGE DISTANCE (E-D)
STEEL	MIN. 18 GA. f _y = 36 (KSI)	#14 SDS SAE GR. 5 SCREW	2" FROM CORNER, 12" O.C.	3 THREADS PENETRATION BEYOND STEEL FRAMING	N/A
CONCRETE	MIN. f _c = 3000 PSI	¾" Ø HILTI KWIK CON II	2" FROM CORNER, 12" O.C.	1 ½"	2 ½"
MASONRY	CONFORMS TO ASTM C90 GROUT CONFORMS TO ASTM C476 MIN. GROUT f _c = 2000 PSI	¾" Ø HILTI KWIK CON II	2" FROM CORNER, 12" O.C.	1 ½"	2 ½"
WOOD	MIN. S.G. = 0.55	#10 WOOD SCREW	2" FROM CORNER, 12" O.C.	1 ½"	N/A

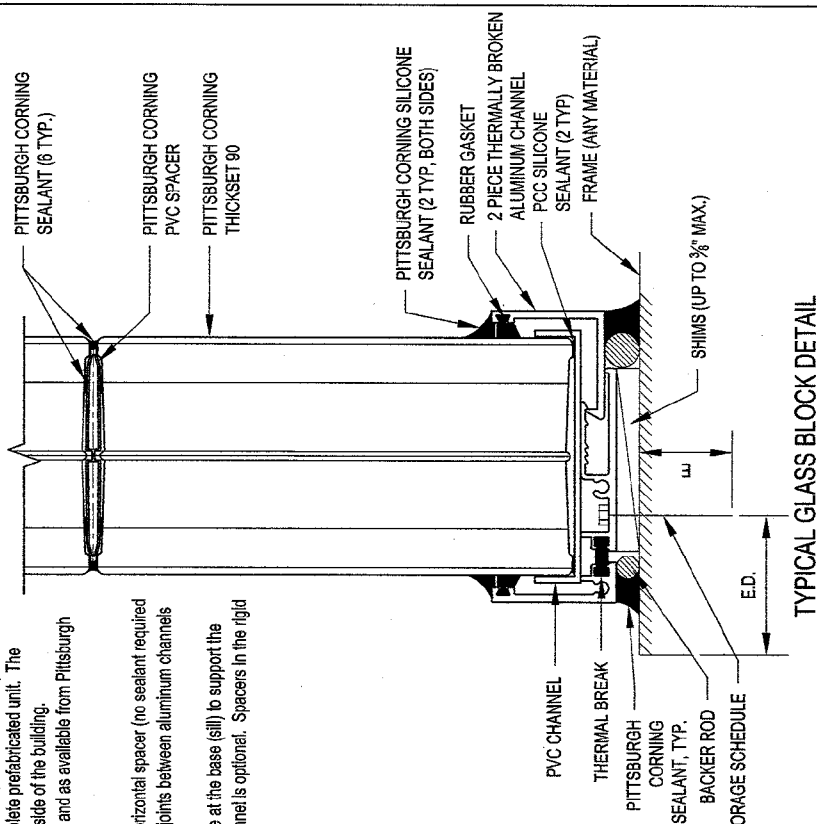
INSTALLATION NOTES:

- Complete Window System only available from Pittsburgh Corning Corporation.
- This System is not intended to be installed piece by piece with spacers.
- Separate dissimilar materials.

PITTSBURGH CORNING GLASS BLOCK

SERIES	PATTERN	NOMINAL DIM.	FACE THICKNESS
THICKSET® 90	DECOR®	8"x8"x4" AND ALL OTHER SMALLER FACE SIZES	0.75 IN.
THICKSET® 90	VUE®	8"x8"x4" AND ALL OTHER SMALLER FACE SIZES	0.75 IN.
THICKSET® 90	ENDURA®	8"x8"x4" AND ALL OTHER SMALLER FACE SIZES	0.75 IN.

REV	DESCRIPTION	DATE



SEE ANCHORAGE SCHEDULE

LightWise Architectural Systems
Hurricane Resistant Window

PITTSBURGH CORNING CORP.
800 PRESQUE ISLE DRIVE
PITTSBURGH, PA 15239

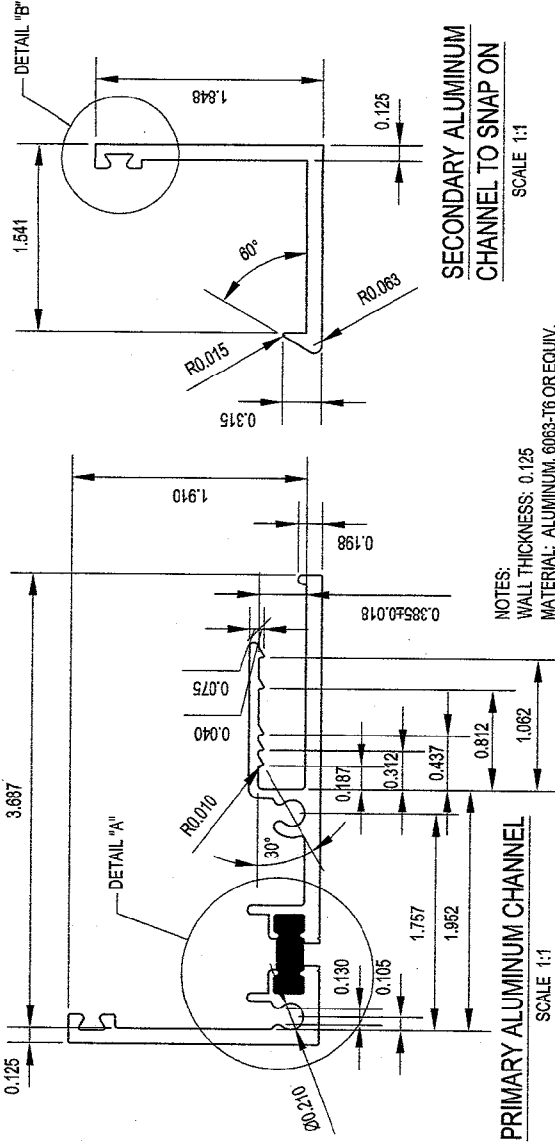
SCALE: 1:2 DWG. NO. HRWS-001 REV 0

BY: LBA DATE: 12/19/2011 SHEET: 2 OF 3

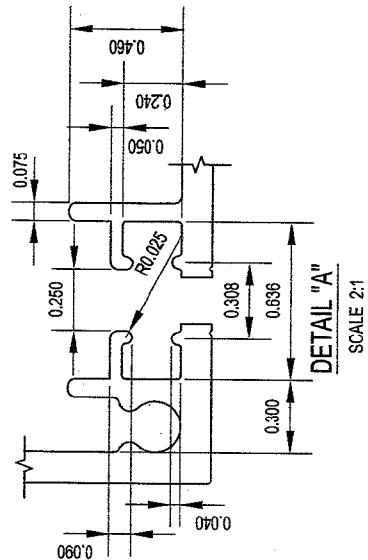
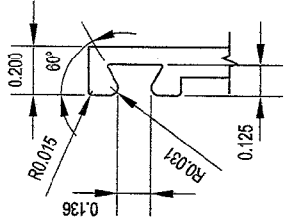
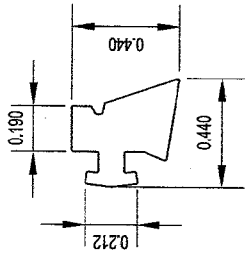
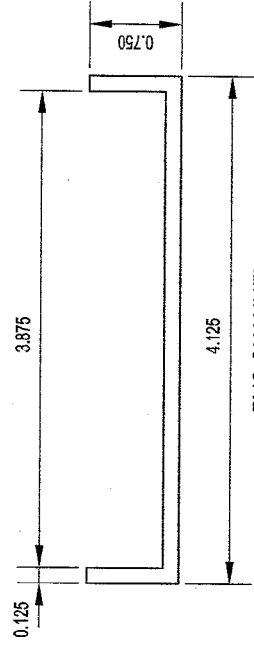
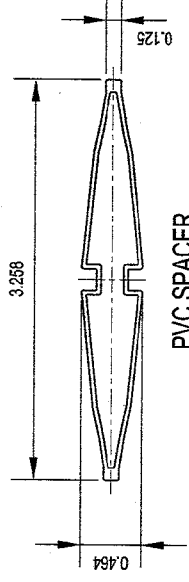
PRODUCT REVISED as compliance with the Florida Building Code Acceptance No. 11-1229.03 Expiration Date 10/14/2015 By: [Signature] Miami Dade Product Control

ALEXIS SPRUO, P.E.
REGISTERED PROFESSIONAL ENGINEER
127 W. FAIRBANKS AVE., STE. 403
WINTER PARK, FL 32789
PEFE CERT. OF AUTHORIZATION NO. 28871

REVISIONS		DATE
REV	DESCRIPTION	



NOTES:
WALL THICKNESS: 0.125
MATERIAL: ALUMINUM, 6063-T6 OR EQUIV.
FINISH: 204 R1 CLEAR ANODIZE
STANDARD TOLERANCES FOR EXTRUDED PRODUCTS
APPLY UNLESS SPECIFICALLY SHOWN OTHERWISE.



TITLE
LightWise Architectural Systems
Hurricane Resistant Window

SCALE
VARIES

DWG. NO.
HRWS-001

REV
0

BY
LBA

DATE
12/07/2011

SHEET
3 OF 3

PITTSBURGH CORNING CORP.
800 PRESQUE ISLE DRIVE
PITTSBURGH, PA 15239

PRODUCT REVISED
in compliance with the Florida
Building Code
Account No. 11-1229.03
Expiration Date: 10/16/2013
By: [Signature]
Miami Dade Product Control

ALLEN SPYRONE, P.E.
FLORIDA REGISTERED PROFESSIONAL ENGINEER
488
WINTER PARK, FL 32789
FLORIDA CERT. OF AUTHORIZATION NO. 29878